

4/23/24

**2024 CTUIR Emergency Tributary Regulations for
Spring/Summer Chinook Fisheries**

Pursuant to Chapter 2 of the Fish and Wildlife Code of the Confederated Tribes of the Umatilla Indian Reservation, the FWC has the authority to establish regulations for Umatilla ceremonial, subsistence, and commercial fisheries. Pursuant to that authority, the FWC adopted the following regulations: Any person, who is a CTUIR tribal member that exercises off-reservation treaty rights shall have in his or her possession a CTUIR tribal identification card. Non-CTUIR tribal members are prohibited from engaging in fishing rights with CTUIR tribal members established by these regulations.

Stream	Adult Projections		Treaty Harvest		Open/Closed Fishery Dates
	Hatchery	Natural	Hatchery	Natural	
Catherine Creek	409	126	16	1	Open; 4/23/24
Granite Creek	N/A	N/A	N/A	5	Open; 4/23/24
Imnaha River	860	345	19*	7*	Open; 4/23/24
Lookingglass Creek	549	71	97*	6*	Open; 4/23/24
NF John Day River	ERS = <1,000		N/A	20	Open; 4/23/24
Minam River	N/A	366	N/A	14*	Open; 4/23/24
Tucannon River	153	57	0	0	Closed;
Umatilla River	ERS = >1,500		125		Open; 4/23/24
Upper Grande Ronde	335	72	6	1	Open; 4/23/24
Wallowa/Lostine Rivers	576	456	53*	16*	Open; 4/23/24
Walla Walla River	ERS = <200		0	0	Closed;
Wenaha River	N/A	715	N/A	12*	Open; 4/23/24
Yakima River	ERS = 2,370		Adequate returns to support a fishery.		Open; 4/23/24

*Harvest shared with Nez Perce Tribe

Acronyms:

ERS = Expected Run Size, which includes both hatchery and natural origin adult projections;

TBD = To Be Determined;

N/A = Not Applicable.

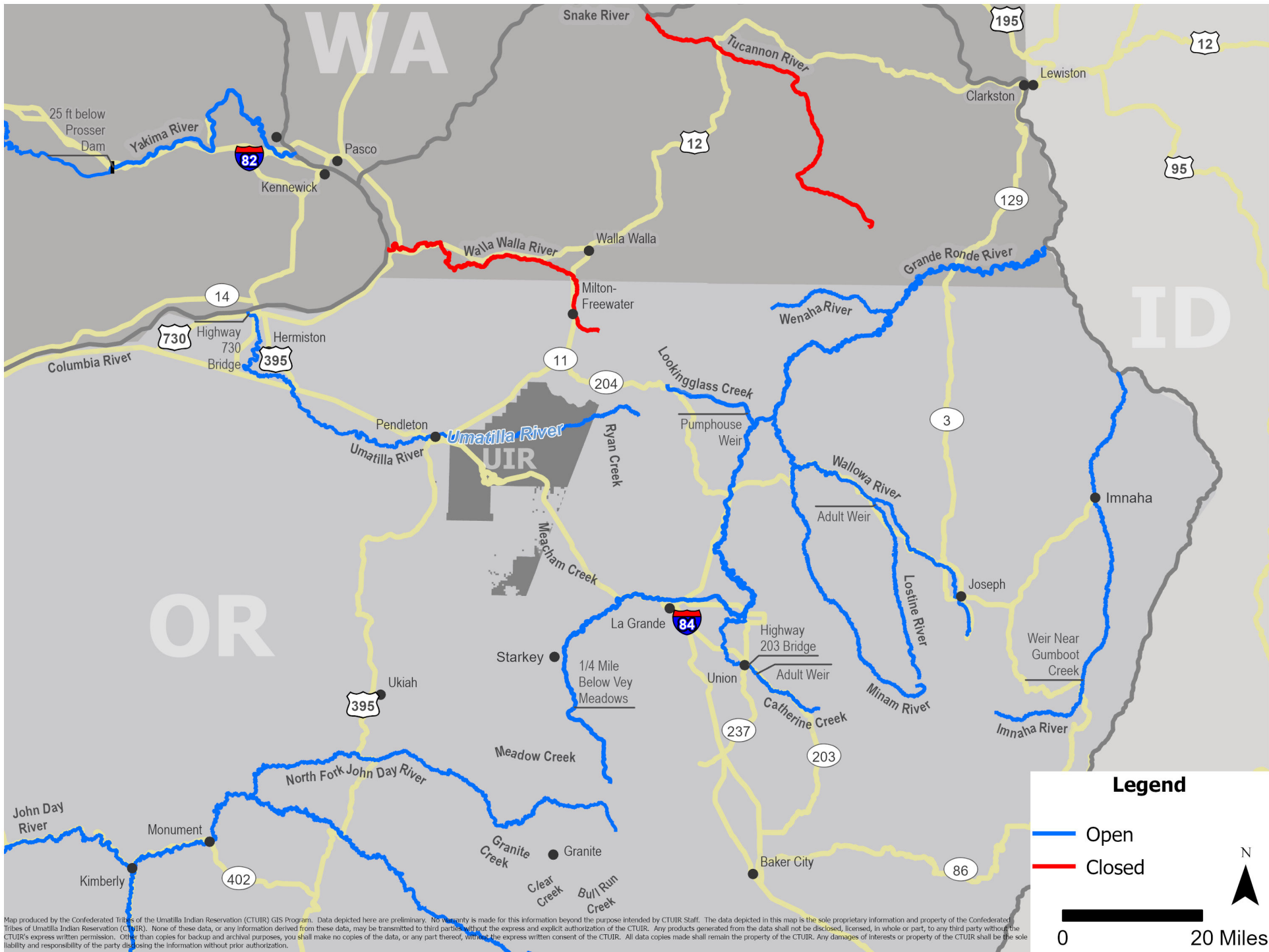
Notes:

Fishing for ESA-listed bull trout & Pacific Lamprey shall be closed on all listed streams at this time except for Pacific Lamprey on the Umatilla River from April 23 through June 30. Fishing for rainbow, mountain whitefish and all other resident fish year around is permitted under permanent regulation.

In season run information:

The harvest allocation is based on pre-season forecasts and the FWC may adjust the harvest target as additional in-season information becomes available to meet management objectives. Investigation of additional harvest opportunities in NE OR/SE WA will continue throughout the season.

Currently, tributary returns are expected to be similar 2023, which was below the 10-year average. This places an increased emphasis on broodstock, and escapement needs for our future runs.



Legend

- Open
- Closed

0 20 Miles

N
▲

Map produced by the Confederated Tribes of the Umatilla Indian Reservation (CTUIR) GIS Program. Data depicted here are preliminary. No warranty is made for this information beyond the purpose intended by CTUIR Staff. The data depicted in this map is the sole proprietary information and property of the Confederated Tribes of Umatilla Indian Reservation (CTUIR). None of these data, or any information derived from these data, may be transmitted to third parties without the express and explicit authorization of the CTUIR. Any products generated from the data shall not be disclosed, licensed, in whole or part, to any third party without the CTUIR's express written permission. Other than copies for backup and archival purposes, you shall make no copies of the data, or any part thereof, without the express written consent of the CTUIR. All data copies made shall remain the property of the CTUIR. Any damages of interests or property of the CTUIR shall be the sole liability and responsibility of the party disclosing the information without prior authorization.

CATHERINE CREEK FISHERY

Spring Chinook adult returns to Catherine Creek in 2024 are expected to be about 126 natural and 409 hatchery fish. A fish harvest target of 1 natural fish and 16 hatchery fish has been identified by the Fish and Wildlife Commission. Jacks can be kept and will not be included in this harvest target. The fishery will occur immediately below the weir (see description below) where broodstock are taken, fish are passed above, and many are taken to lower Lookingglass Creek to augment the fishery there.

SEASON & LOCATIONS: The area open to fishing by CTUIR tribal members will occur in a 1.5-mile reach of Catherine Creek starting from the highway 203 bridge at the east edge of Union upstream below the weir/adult trap. The Catherine Creek fishery will occur seven days per week and continue until the harvest target has been met or until further notice. A fish harvest monitor will confirm hatchery and wild fish catch composition. The catch of hatchery fish will be limited by the harvest of natural fish and fishers will be notified when the natural harvest quota has been met. This area is all privately owned land and fishers are asked to access at the top and bottom boundaries and at a mid-way turnout where the stream is near the road.

GRANITE CREEK FISHERY

SEASON & LOCATIONS: Granite Creek (Granite Creek tributary CLEAR CREEK SHALL BE CLOSED) will have a limit of 5 fish. The Granite Creek fishery will occur seven days per week and continue until the harvest target has been met or until further notice. The area open to fishing by CTUIR tribal members will occur in Granite Creek from the mouth upstream to the mouth of Clear Creek near the town of Granite.

IMNAHA RIVER FISHERY

Spring Chinook returns to the Imnaha River in 2024 are expected to be about 345 natural and 860 hatchery fish. Tribal fish harvest target of 7 natural and 19 hatchery fish have been set by the FWC. A joint CTUIR/NPT fishery will occur this year and the fish harvest targets are the total available fish for both tribes. The FWC may adjust the harvest target as additional in-season information becomes available.

SEASON & LOCATIONS: The area open to fishing by CTUIR tribal members will occur in the Imnaha River from the mouth up approximately 55 miles to below the fish weir near the mouth of Gumboot Creek. Primary spawning areas above the fish weir will remain closed to spring Chinook fishing. The Imnaha River fishery will occur seven days per week and continue until the harvest target has been met or until further notice.

LOOKINGGLASS CREEK FISHERY

Spring Chinook returns destined to Lookingglass Creek (from CTUIR supplementation effort and adult outplants from Catherine Creek to lower Lookingglass Creek) are expected to allow for broodstock and spawning escapement needs. Lookingglass Creek natural and hatchery origin fish are being considered as composite population for harvest management at this time. Spring Chinook adult returns to Lookingglass Creek in 2024 are expected to be about 71 natural and 549 hatchery fish. A shared harvest target of 6 natural fish and 97 hatchery fish has been identified by the Fish and Wildlife Commission as part of a joint CTUIR/NPT fishery. Jacks can be kept and will not be included in this harvest target. This will create an opportunity for a fishery in lower Lookingglass Creek in 2024.

SEASON & LOCATIONS: The fishery will occur from Lookingglass Hatchery Pump House weir down to the Highway Bridge just above the mouth of Lookingglass Creek (about two stream miles). There shall be no trespass/walking on/fishing from hatchery facilities such as fish ladder, fish weir, screw traps, etc. The Lookingglass Creek fishery will occur seven days per week and continue until the harvest target has been met or until further notice.

NORTH FORK JOHN DAY FISHERY

The John Day River supports the largest naturally producing spring Chinook run in NE Oregon. The North Fork John Day supports the majority of this production. The John Day River has supported runs ranging from an average of 2,000-4,000 spring Chinook in most recent years. In order to exercise treaty fishing rights while allowing for continued population rebuilding, the John Day River Spring Chinook harvest targets are based on a “not to exceed 5%” of a conservatively estimated adult return. Based on this, a tribal fish harvest target of 20 fish has been set by the FWC.

SEASON & LOCATIONS: The area open to fishing by CTUIR tribal members will occur in the mainstem North Fork John Day River with on opening seven days per week and continue until harvest target has been reached or until further notice. All other tributaries in the John Day Basin are CLOSED to spring Chinook fishing. *This closure includes tributaries; Bull Run Creek, the Middle Fork John Day River and upper mainstem John Day River.*

MINAM RIVER FISHERY

Spring Chinook returns to the Minam River in 2024 are expected to be about 366 natural adult spring/summer Chinook. A fish harvest target of 14 natural fish has been identified by the Fish and Wildlife Commission. A joint CTUIR/NPT tribal fishery will occur this year.

SEASON & LOCATIONS: The area open to fishing by CTUIR tribal members will occur in the Minam River starting from the mouth (confluence with Wallowa River) to approximately 2.5 miles upstream. The Minam River will occur seven days per week and will continue until the harvest target has been reached or until further notice.

UMATILLA RIVER FISHERY

RUN STATUS: In-season adult returns to Threemile Dam are expected to exceed 1,500 adults. The five year average is approximately 1,727 adult spring Chinook. About 508 fish will again be taken for broodstock at Threemile Dam facility and transported to the South Fork Walla Walla facility for holding and spawning.

SEASON: Open to spring Chinook season starting on April 23, 2024 and continues until the harvest target of 125 fish is met or until further notice.

LOCATION: Umatilla River and tributaries above the Hwy 30 bridge at Umatilla, except for natural production sanctuary areas above the reservation. Sanctuary areas closed to fishing are: 1) the upper mainstem Umatilla River and its tributaries above the upper reservation boundary (above mouth of Ryan Creek); and; 2) Meacham Creek and tributaries above the paved county road bridge about 1/2 mile up Meacham Creek from its mouth. *NOTE:* Above sanctuary areas are to protect salmon in the basins primary spawning habitat. Also, 200 foot area (markers posted) above and below the outlet of the Imaques-C-Mem-lni-Kem fish facility and all irrigation diversions dams/ladders will be closed to fishing.

UPPER GRANDE RONDE RIVER FISHERY

Spring Chinook adult returns to Upper Grande Ronde River in 2024 are expected to be about 72 natural and 335 hatchery fish. A fish harvest target of 1 natural fish and 6 hatchery fish has been identified by the Fish and Wildlife Commission. Jacks can be kept and will not be included in this harvest target. Although the overall return is large and justifies a tribal fishery it will be short based on a small natural harvest target.

SEASON & LOCATIONS: The area open to fishing by CTUIR tribal members will occur in a 14-mile reach of the upper Grande Ronde River starting at the mouth of Meadow Creek (near Starkey) upstream to the bridge approximately ¼ mile below Vey Meadow (near USFS boundary). The Upper Grande Ronde River fishery will occur seven days per week and continue until harvest target has been reached or until further notice.

WALLOWA/LOSTINE RIVER FISHERY

Spring Chinook returns to the Wallowa/Lostine River in 2024 are expected to be about 456 natural and 576 hatchery fish. Tribal fish harvest target of 16 natural and 53 hatchery fish have been set by the FWC. A joint CTUIR/NPT fishery will occur this year and the fish harvest targets are the total available for both tribes. The FWC may adjust the harvest target as additional in-season information becomes available.

SEASON & LOCATIONS: The area open to fishing by the CTUIR tribal members will occur in the Wallowa River from its confluence with the Minam River upstream to the confluence with the Lostine River; then a 0.75 mile reach from the mouth of the Lostine River upstream to below the weir/adult trap. Primary spawning areas above the fish weir will remain CLOSED to spring/summer Chinook fishing. The Wallowa/Lostine fishery will occur in seven days per week and will continue until the harvest target has been met or until further notice.

WENAHA RIVER FISHERY

Spring Chinook returns to the Wenaha River in 2024 are expected to be about 342 natural adult spring/summer Chinook. A joint CTUIR/NPT tribal fishery will occur this year.

SEASON & LOCATIONS: The area open to fishing by CTUIR tribal members will occur in the Wenaha River starting from the mouth (confluence with Grande Ronde River) to approximately 2.5 miles upstream. The Wenaha River will occur seven days per week continue or until the harvest target of 12 has been reached.

YAKIMA RIVER FISHERY

SEASON AND LOCATIONS: Yakima River from Prosser Dam downstream to west and south shores of Bateman Island. Fishing is allowed from noon Tuesdays through 6 pm Saturdays weekly through June 30, 2024. The expected run size for the Yakima River is 2,370 for 2024.

SPECIFIC RESTRICTIONS: It shall be unlawful to place fishing platforms, or to take, molest, injure, or fish for salmon and steelhead within 25 feet of any fish ladder, fishway, or fish bypass pipes associated with irrigation canal fish screening structures.

NON-INDIAN TROUT FISHING CLOSURE ON UMATILLA INDIAN RESERVATION:

Non-Indian trout fishing in the Umatilla River and tributaries on the Umatilla Indian Reservation - except McKay Creek system - is CLOSED through September 15, 2024 to provide increased protection to spring Chinook.

FOR SAFETY CONCERNS: It shall be unlawful to take or attempt to take fish from within 25 feet above or below fishways (e.g. adult fish ladders at Threemile Dam, Cold Springs Dam, and Westland Dam, Lookingglass Creek, etc.). There shall be no trespassing/walking on/fishing from dam and/or hatchery facilities such as fish ladder, fish weir, screw traps, etc.

VALUE OF HARVEST DATA:

Information on the tribal spring Chinook harvest and ability and success of spring Chinook to remain and spawn in these rivers are important to the Tribe. Tribal harvest monitors will be out monitoring catch and obtaining other biological data. The Fish and Wildlife Commission requests that tribal fishers cooperate with call-in catch reporting and in the field with tribal harvest monitors regarding catch information tagged fish, etc. This information will help provide a database which fishery managers can utilize for the enhancement of the ceded area populations. Also, the harvest monitor has the permission of the Fish and Wildlife Commission to notify tribal fishers when a specific target has been met. In this case, fishing in that stream would be closed immediately and a public notice would be posted the next work day. In addition, post-season interviews will be conducted following in summer/early fall; specific to Northeast Oregon tributary harvest.

LANDOWNER PERMISSION:

Fishers are entitled to river access throughout the open river corridors but will need to first inquire with local landowners if private driveway or field access is desired. Any trespass issues resulting from lack of landowner coordination may impact future access opportunities. Your cooperation is appreciated.

Contacts/questions:

- (541) 429 – 7382 Corinne Sams, Chairperson, Fish and Wildlife Commission;
- (541) 429 – 7285 Jeremiah Bonifer, Fisheries Program Manager or;
- (541) 429 – 7277 Preston Bronson, Harvest Manager;
- (541) 429 – 7114 Tiya-Po Farrow, Harvest Monitor.

FWC COMMISSION APPROVAL:



FWC Chair

Date: 4/26/24



FWC Member

Date: 4/26/24