

General Remodel Notes:

- Demo & replace with similar flooring throughout (Existing: Laminate and carpet)
- Patch and paint walls; replace base as needed; replace ceiling tile as needed
 - coordinate paint color with existing PWD "standard white"
 - spec durable flooring (3-5 years) with easy maintenance care
- ADA compliance at entry; ADA on SW corridors (see plan)

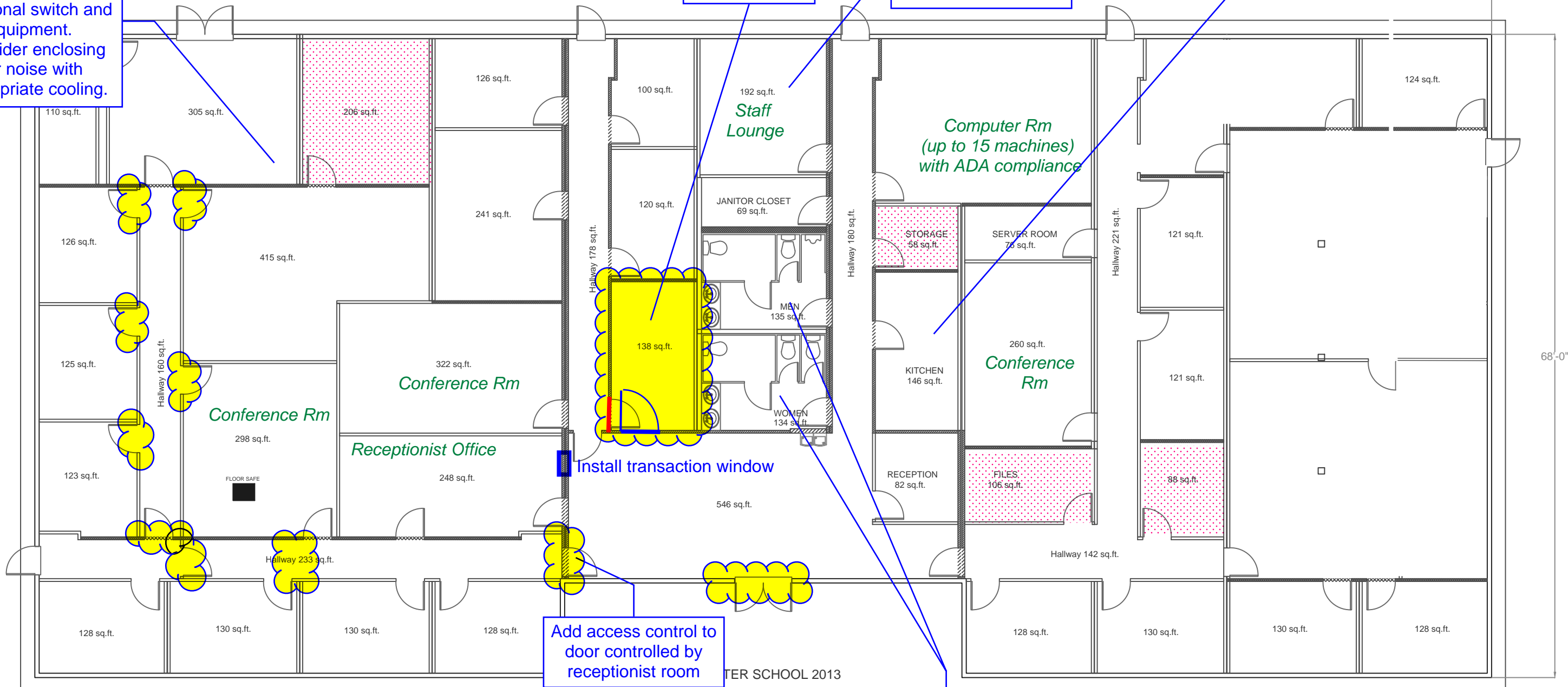
HARTER SCHOOL FLOOR PLAN

Existing Data Rack to remain. It can accommodate additional switch and equipment. Consider enclosing for noise with appropriate cooling.

PROX. 1
Renovate existing room into ADA BR w/ new entry

Remove all counters, fixtures, and cap lines

Demo existing kitchen equipment and replace with new cabinets and sink



Install transaction window

Add access control to door controlled by receptionist room

Demo all bathroom fixtures/particians & replace with new. Maintain same layout

- Areas to meet ADA design standards.
 - Install ADA compliant front entry doors with card access and ADA Button.
 - Install ADA compliant doors for highlighted rooms.
 - Adjust hallway thresholds to meet ADA widths in hallway.

No airflow to rooms making it difficult to use as office space; previously used as storage

NCS Exterior Improvements

General Exterior Note:

- Prep and repaint exterior siding and doors

Demo existing bed and entry; retain blocks to use on west side. Replace with asphalt and add retaining wall with new railing

Retain building exterior sign frame, but remove existing insert

Cut and replace asphalt with ADA compliant ramp

Freight Area:

- Remove and replace rail
- "Re-grout" broken areas of landing pad
- Install protective end cap/channel iron on delivery side
- Install new iron posts

Beds:

- Clear and grub around trees with selective demo of smaller trees.
- Import clean fill for the north bed and infill with 3/4" (intended use will be seating area)

Retaining wall

- Infill missing areas with scavenged blocks from the north side; replace remaining with matching block

Ramp Options:

- Pricing to demo and install new stairs with landings for each door
- New sheathing and deck replacement

