



5/21/25 Update

Lookingglass Creek Construction Activity/Umatilla River Expectations

What?

- The Lower Snake River Compensation Plan is upgrading the water intake and fish ladder at Lookingglass Hatchery starting in April 2025.
- To complete this project the upper ladder will be demolished, and a new ladder will be constructed. During the construction, a temporary weir will be installed at the lower fish ladder to collect broodstock and to transport fish upstream to spawn.

Why?

- The current water intake is nearing the end of its operational life and prone to fail which could make it impossible to deliver water to the hatchery.
- These improvements are vital for the safety of fish raised at Lookingglass Hatchery (which includes all NE Oregon salmon, including the Imnaha and Lostine Rivers). Having a reliable water intake system for the facility helps minimize the chances of catastrophic fish loss in the hatchery and ensures stable fisheries in future years.
- Additionally, a new fish ladder will improve fish passage to help adult fish reaching spawning habitat and increase natural production in Lookingglass Creek.

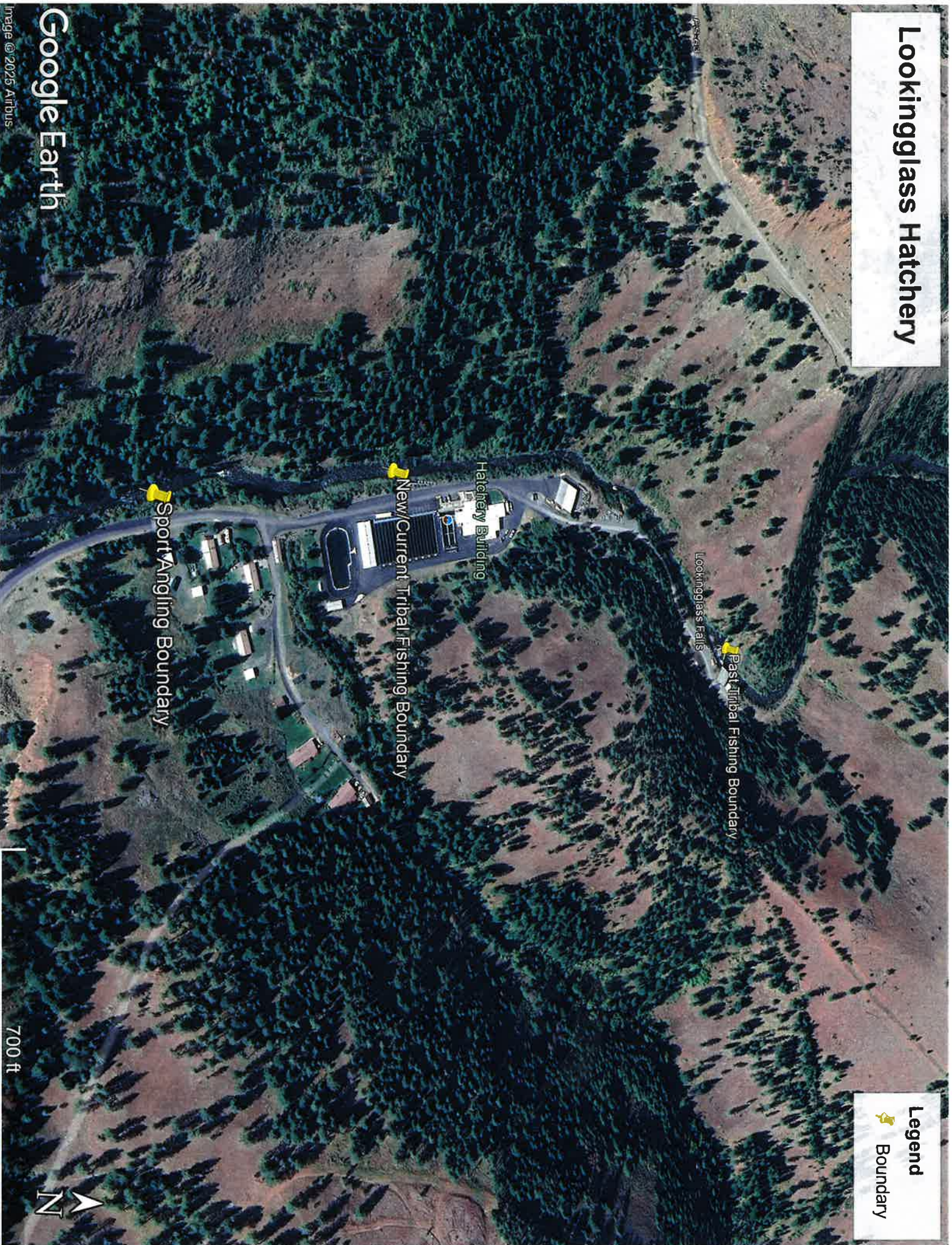
How (will this affect us)?

- Tribal fisheries in Lookingglass Creek in 2025 will look different than previous years.
- Because of the temporary weir, there will not be any salmon between the lower and upper ladders (~1/4 mile), which includes some traditional tribal fishing areas.
- This will only impact fisheries in 2025. Once the project is complete, the reach between the lower and upper ladders.

Expectations

- In-season run expectations are 200 hatchery and 50 natural origin spring Chinook to Lookingglass Creek with harvest targets of 25 hatchery origin and 4 natural origin for the Treaty fishery.
- At a low run size and a minimal harvest target will result in the fishery closing earlier than in past years.
- Spring Chinook returns are meeting expectations for the Umatilla River. The Treaty harvest target in the Umatilla River is 275 adult spring Chinook. If returns exceed 2,500 returns to the mouth of the Umatilla River, then the Treaty harvest target will increase to 425 adults. Jacks are not counted towards the harvest target.
- Contacts/questions:
- (541) 429 – 7382 Corinne Sams, Chair, Fish and Wildlife Commission;
- (541) 429 – 7285 Jerimiah Bonifer, Fisheries Program Manager or;
- (541) 429 – 7277 Preston Bronson, Harvest Manager;
- (541) 429 – 7114 Tiya-Po Farrow, Harvest Monitor.

Lookingglass Hatcherery



Legend
Boundary



700 ft