



Rangeland Management Plan

DEPARTMENT OF NATURAL RESOURCES – RANGE, AGRICULTURE &
FORESTRY PROGRAM

Interdisciplinary Team

- ▶ Six DNR Programs
 - ▶ Three Departments
 - ▶ One Federal Agency
 - ▶ One Contractor
- ▶ Gordy Schumacher – RAF
 - ▶ Cheryl Shippentower – RAF
 - ▶ Amanda Lowe – RAF
 - ▶ Mike Lambert – Fisheries
 - ▶ Scott Peckham – Wildlife
 - ▶ Carey Miller – Cultural Resources
 - ▶ Robin Harris – Water Resources
 - ▶ Stacy Schumacher – GIS
 - ▶ Colleen Sanders – First Food Policy
 - ▶ Kelly George – Economic Development
 - ▶ Koko Hufford – Economic Development
 - ▶ Patty Perry – Planning
 - ▶ Jeff Casey – Umatilla Agency Fire
 - ▶ Jerry Lauer – Elkhorn Resources Solutions

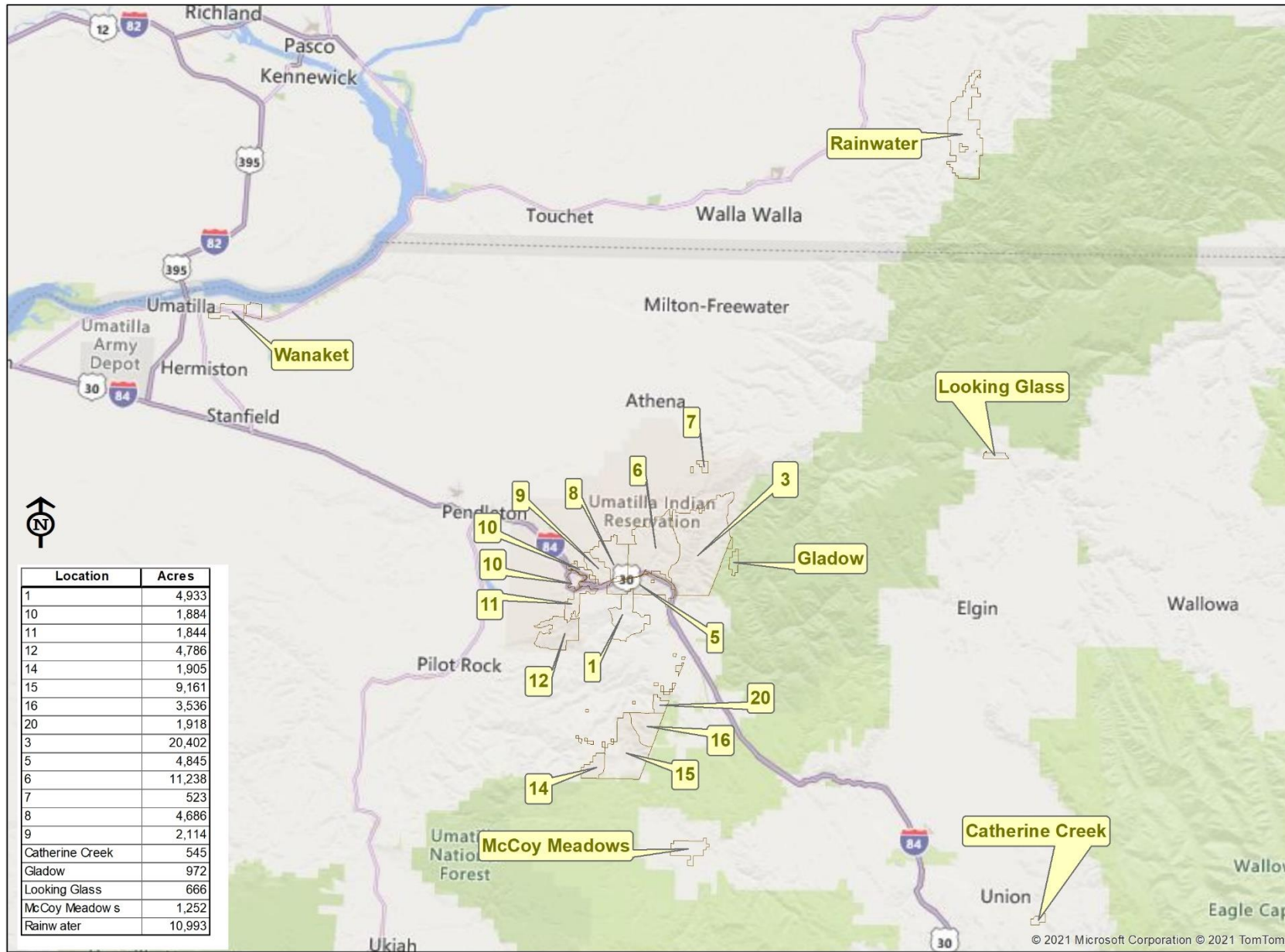
Scope

- ▶ DNR-Range, Agriculture and Forestry Program is proposing to develop a Rangeland Management Plan (RMP) with an associated Environmental Assessment (EA) to meet requirements of the American Indian Agricultural Resource Management Act (AIARMA) and the National Environmental Policy Act (NEPA).
- ▶ The intent of the EA and RMP is to provide guidance and direction for management of rangelands on the Umatilla Indian Reservation (UIR) and all Tribal fee and Trust rangelands outside of the UIR.
- ▶ An EA will evaluate potential impacts of range and pasture management actions on the human and natural environments of lands managed by the Confederated Tribes of the Umatilla Indian Reservation (CTUIR). The corresponding management plan will detail the selected alternative or combination of alternatives described in the EA.
- ▶ The desired outcomes are healthy natural ecosystems to support the First Food Mission of protecting range, pasture and associated riparian systems for the perpetual cultural, economic, and sovereign benefit of the CTUIR.

Process

- ▶ The Interdisciplinary Team (IDT) will use a three-step process to formulate a reasonable range of management alternatives in the EA.
 - 1) Public scoping in the form of an article in the Confederated Umatilla Journal (CUJ), public meeting and presentations to CTUIR Committees/Commissions and Board of Trustees (BOT) are planned.
 - 2) The IDT will then develop goals and objectives that address key community derived issues and concerns.
 - 3) The IDT will develop standards and guidelines for the physical, biological, and social conditions necessary for any alternative to meet the goals and objectives.
- ▶ Finally, the IDT will formulate management alternatives that reasonably could be expected to meet the goals and objectives.
 - ▶ In formulating the management alternatives, the IDT will consider the effects of management on CTUIR culture and natural resource values.
 - ▶ The RMP will assist the DNR with actively managing rangeland that is consistent with both cultural and natural resource values.
 - ▶ The Superintendent of the Bureau of Indian Affairs Umatilla Indian Agency and the BOT will decide which management alternative will be implemented and approve the final RMP.

Map



Geographic extent of rangelands and grazable woodlands to be covered by the RMP broken down by ownership including acres.

Includes reservation range units, pastures (including Wheelhouse and McCoy Meadows), Rainwater, Wanaket, Looking Glass, Southern Cross and Gladdow,

Ownership	Acres
Tribal Trust	20,025
Allotted Trust	30,530
Tribal Fee	38,212
Non-Indian Fee	7,592
Total	96,358

Public Scoping

- ▶ Development of list of Issues & Concerns
- ▶ Outreach
 - ▶ Committee/Commission Meetings
 - ▶ Interdisciplinary Team Meetings
 - ▶ Newspaper Article

Notes

